

RECOVERY OF FOOD SURPLUSES

OPERATIVE INSTRUCTIONS

WHO CAN DONATE?

- All food business operators (FBOs)
- Meal production centers involved in the event

➤ Participation requires identifying a contact person and providing their name and contact information



✓ WHAT CAN BE DONATED?

Unsold food products that maintain hygiene and safety standards:

- Pre-packaged foods (in closed or partially used packages, but correctly stored) which indicate the shelf life date or which do not require that date;
- Unpackaged foods such as fresh fruit and vegetables, fresh meat, fresh fish, bakery products, ready meals from catering services;
- Products beyond the minimum durability date (preferably to be consumed by..), provided the integrity of the primary packaging and proper storage conditions are guaranteed.

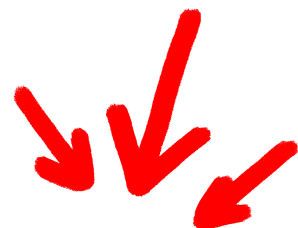
⊖ FOODS EXCLUDED FROM DONATION

- Highly perishable foods for which the cold and/or hot chain has not been maintained after preparation (e.g., displayed in the buffet at room temperature);
- Foods with damaged or altered packaging that cause contact with the external environment, compromising safety;
- Foods stored in containers/bags not suitable for food contact;
- Foods with obvious signs of alteration (unpleasant colors and/or odors);
- Dishes made with raw or partially cooked animal products (eg. carpaccio, roast beef, sushi).
- Marinated or seasoned fish dishes;
- Sweet/savory baked goods with fillings of creams/sauces made from unpasteurized eggs;
- Products with an expired use-by date cannot be donated (to be consumed by..).

HOW TO DONATE?

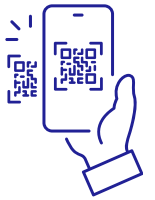
- Must have the following materials/equipment available:

- ☐ Containers suitable for food contact (MOCA)
- ☐ Protective film and/or containers with lids to protect food from possible external contamination
- ☐ Gastronorm, insulated containers (possibly equipped with cold packs) and a refrigerator to maintain temperature
- ☐ Delivery document to identify the food:
 - attaching a copy of the menu containing essential information about the donated products
 - or
 - completing a specific delivery document, as below:

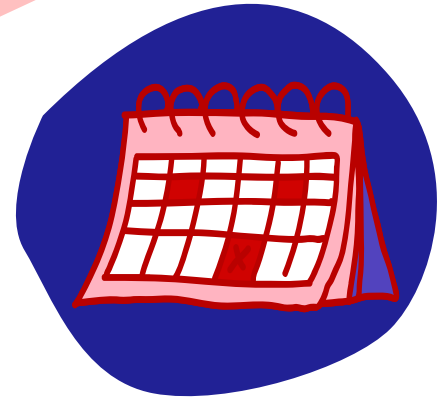


DELIVERY DOCUMENT ____ / ____ / ____	
Donating producer	P.IVA
Telephone	Email
Description of donated food item	
Storage of items	
(e.g., room temperature / 0-4 C / frozen)	
List of ingredients and possible allergens:	

WHERE TO DONATE?



- Collection Centers identified within the racetrack
- Staff will be present to accept the food
- Food surpluses will be recorded in terms of type/quantity for subsequent reporting



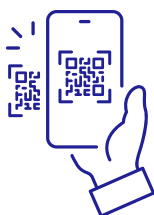
WHEN TO DONATE?

- Specific times of the day:

	Collection starts	Collection ends	Collection centers
Sunday	8.00 PM	10.00 PM	Pickup point 1 and 2
Monday	9.00 AM	13.00 AM	Pickup point 1

RECOVERY OF FOOD SURPLUSES

OPERATIVE INSTRUCTIONS



FOR FURTHER INFO

 **ATS Brianza**
+39 3333353552
(also Whatsapp)

 **Autodromo**
+39 3357775767

Sistema Socio Sanitario



ATS Brianza

**Regione
Lombardia**



M O N Z A



CSV

**MONZA LECCO
SONDRIO ETS**

centro di servizio
per il volontariato