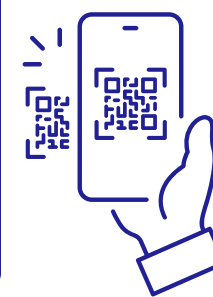


RECOVERY OF FOOD SURPLUSES

OPERATIVE INSTRUCTIONS



WHO CAN DONATE?

- All food business operators (FBOs)
- Meal production centers involved in the event

➤ Participation requires identifying a contact person and providing their name and contact information



✔ WHAT CAN BE DONATED?

Unsold food products that maintain hygiene and safety standards:

- Pre-packaged foods (in closed or partially used packages, but correctly stored) which indicate the shelf life date or which do not require that date;
- Unpackaged foods such as fresh fruit and vegetables, fresh meat, fresh fish, bakery products, ready meals from catering services;
- Products beyond the minimum durability date (preferably to be consumed by...), provided the integrity of the primary packaging and proper storage conditions are guaranteed.



⊘ FOODS EXCLUDED FROM DONATION

- Highly perishable foods for which the cold and/or hot chain has not been maintained after preparation (e.g., displayed in the buffet at room temperature);
- Foods with damaged or altered packaging that cause contact with the external environment, compromising safety;
- Foods stored in containers/bags not suitable for food contact;
- Foods with obvious signs of alteration (unpleasant colors and/or odors);
- Dishes made with raw or partially cooked animal products (eg. carpaccio, roast beef, sushi).
- Marinated or seasoned fish dishes;
- Sweet/savory baked goods with fillings of creams/sauces made from unpasteurized eggs;
- Products with an expired use-by date cannot be donated (to be consumed by...).

HOW TO DONATE?

- Must have the following materials/equipment available:

- Containers suitable for food contact (MOCA)
- Protective film and/or containers with lids to protect food from possible external contamination
- Gastronorm, insulated containers (possibly equipped with cold packs) and a refrigerator to maintain temperature
- Delivery document to identify the food.



WHEN TO DONATE?

- Specific times of the day:

	Collection starts	Collection ends	Collection centers
Thursday	8.30 PM	10.00 PM	Pickup point 1
Friday	8.30 PM	10.00 PM	Pickup point 1 and 2
Saturday	8.30 PM	10.00 PM	Pickup point 1 and 2
Sunday	8.30 PM	10.00 PM	Pickup point 1 and 2
Monday	7.00 AM	11.00 AM	Pickup point 1

WHERE TO DONATE?



- Collection Centers identified within the racetrack
- Staff will be present to accept the food
- Food surpluses will be recorded in terms of type/quantity for subsequent reporting